

AMS REALTIME Costs

At last...integrated Costing and Scheduling!

In the past, cost and schedule integration has been an elusive capability, because systems designed for one function have been weak when it comes to performing the other. Supplied as a standard feature within AMS REALTIME Projects, AMS REALTIME Costs integrates your costs and your schedule and facilitates management of both through one powerful solution.

A look at some of the detail...

Activities on your project can be costed by simply defining hourly or daily rates for each resource used on that activity. These costs can then be viewed at summary levels and for the project as a whole. They can also be constant or escalating through time, providing a time-phased projection of the manpower costs related to your project. In addition to manpower, other costs such as material, travel and sub-contracting can be tracked. The total cost of the plan is baselined and becomes the Budgeted Cost of Work Scheduled (BCWS). As the project begins, progress and actual incurred costs are collected, and various performance calculations are made automatically. These calculations are collectively known as Performance Measurement or Earned Value calculations. The performance calculations made by AMS REALTIME Costs include the following:

- Budgeted Cost for Work Performed (BCWP)
- Actual Cost of Work Performed (ACWP)
- Schedule and Cost Variance/Status (SV and CV)
- Schedule and Cost Performance Index (SPI and CPI)

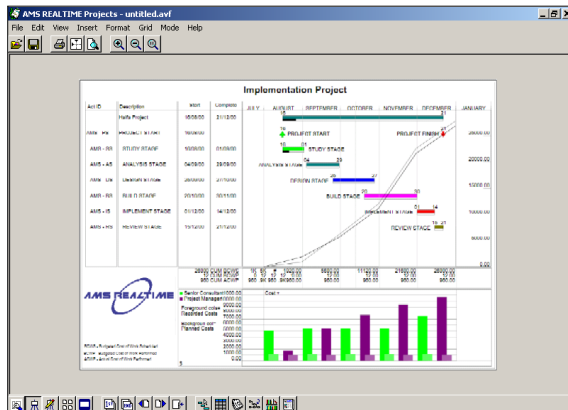
These calculations are augmented with various other indicators, such as

- Estimate-to-Complete (ETC)
- Cost Status (Under, Over or On Budget)
- Estimate-at-Complete (Forecast cost)

More than a dozen other useful results are also provided. The initial cost build-up may include overhead and other burden rates. AMS REALTIME Costs allows this build up to comprise a host of user-defined Elements of Costs. These can be independently input or may be based on one or more other elements. Users can then build up costs from component elements and display them by element. This allows you to focus on the effect of a 'What-if' scenario by changing the cost budget for one group of tasks or resources on a project. Earned value calculations and accumulated costs can be distilled into cost bins, controlled by a fiscal calendar. This allows you

to generate reports that are consistent with existing accounting reports. AMS REALTIME Costs also allows for the import and export of time-phased costs and actual usage – providing unparalleled flexibility to integrate with external cost systems. Actual usage or costs can be loaded at any level, providing users with the freedom to design a solution to meet their specific requirements.

You can associate resources to elements of cost and cost centers. This provides the user with unparalleled capability in apportioning and accrual of costs.



An example of the sophisticated reporting facilities available. Gantt cost curves and multiple resource histograms displayed on one page.

In addition, AMS REALTIME Projects provides integration with tools like wInsight® to support the generation of information for standard report formats to meet regulatory requirements.

AMS REALTIME Vision, another feature provided as standard in AMS REALTIME Projects, contains a number of standard cost related reports including those which plot cost curves. You are also able to create your own cost reports via this tool.

Features

Platforms

- PC (Microsoft Windows XP, 2000, NT4, 98),
- Apple Macintosh (PowerPC)
- UNIX (X-Windows, Motif), Sun Solaris or SunOS, HP UX, IBM RS/6000
- Linux (Redhat)
- Simultaneous multi-platform client/server access

Network environment

- Client/server or standalone environment
- Communication: TCP/IP

Project Management

- Select individual activity bar type, symbols, colour, pattern and markers
- Milestones: military and industry symbols
- Critical Path calculations
- Up to 250 working calendars: Split calendars, Calendar scales from years to minutes, Calendar up to year 2049
- Up to 100 user-definable fields
- 64,000 activities per schedule
- Projects can be comprised of multiple schedules and sub-project schedules
- Rollup schedules for executive summaries
- Integrated usage and costs in real time
- Multiple baseline revisions
- Attach document links to activities
- Import/export generic text files
- Translators for other project management products
- Read/Write databases
- Oracle
- ODBC
- MS Access
- other ODBC compliant databases

Resource Scheduling

- Schedule resources in months, weeks, days, hours or minutes
- Interactive graphic resource assignment
- Rate, total or period-based resource assignment
- Effort-driven resourcing
- Resource and time-constrained levelling
- Interactive conflict resolution and analysis tools
- Variable resource availability
- Resource calendars
- Resource summarization
- Up to 2000 resources per schedule

Repository Features

- ODBC Compliant Database
- Oracle via OCI
- AMS Object Store (AOS)

Graphical User Interface

- Interactive graphical bar chart with optional network links.

Adjust duration, start and complete dates, move entire tasks, post progress or show slip dates

- Interactive logic diagram (PDM)
- Spreadsheet-style tables
- Toolbar icons, menus and hotspots
- Zoom and Pan
- Split screen table
- Interactive resource window
- Sort and match layout criteria as views

Publishing Reports

- WYSIWYG composition
- CSSR and C/SCSC reports (x12 format)
- Autoform for instant report layouts
- Design custom report forms
- Standard PM reports
- Logos, legends and footnotes
- Output to screen, printer, Adobe PDF format or metafiles.
- Interface with wlnsight®

Cost Integration

- CBS, WBS, OBS and user-defined structures
- Calculated from resources or direct entry
- Elements of cost allow cost breakdowns
- Rate tables and apportioned costs
- Standard C/SCSC earned value methods
- User-defined accounting calendars
- Up to 2000 cost centres
- Baseline locking
- Password control
- Performance measurement calculations:
 - Budgeted Cost for Work Scheduled (BCWS)
 - Budgeted Cost for Work Performed (BCWP)
 - Actual Cost of Work Performed (ACWP)
 - Schedule Variance (SV)
 - Cost Variance (CV)
 - Schedule Performance Index (SPI)
 - Cost Performance Index (CPI)
 - Schedule Status (Ahead, On or Behind)
 - Cost Status (Over, On or Under)
 - Budget-at-Complete (BAC)
 - Budget-to-Complete (BTC)
 - Estimate-at-Complete (EAC)
 - Estimate-to-Complete (ETC)
 - Variance-at-Complete (VAC)
 - Time Variance (TV)
 - Independent Estimate-at-Complete (IEAC)
 - Independent Estimate-to-Complete (IETC)
 - Plan Spending Variance (PSV)
- Roll-up to CBS, WBS, OBS, user-defined level
- Progress locking
- Resources interface for loading actuals
- Transaction interface for loading from other systems

System Requirements

Windows

Hardware

Computer with Pentium 133-megahertz (MHz) or higher processor

Operating System

Windows 98, Windows 98 Second Edition, Microsoft Windows NT version 4.0 with Service Pack 6 (SP6) or later, Windows 2000 Professional, or Windows XP Professional TCP/IP

RAM requirements depend on the operating system used

- Windows 98, or Windows 98 Second Edition
24 MB of RAM plus an additional 32 MB of RAM for AMS REALTIME Resources
- Windows NT 4.0 (SP6)
32 MB of RAM plus an additional 32 MB of RAM for AMS REALTIME Resources
- Windows 2000 Professional
64 MB of RAM plus an additional 32 MB of RAM for AMS REALTIME Resources
- Windows XP Professional
128 MB of RAM plus an additional 32 MB of RAM for AMS REALTIME Resources

Apple Macintosh

Hardware

PowerPC processor

RAM requirements

64 MB of RAM plus an additional 32 MB of RAM for AMS REALTIME Resources

Software

Mac OS software version 8.6, 9.0.4, 9.1, or Mac OS X (*supported in classic mode), TCP/IP

UNIX

Hardware

Any standard UNIX machine

RAM requirements

64 MB of RAM plus an additional 32 MB of RAM for AMS REALTIME Resources

Software

X Windows/Motif, Sun Solaris or SunOS, HP UX version 8 or later, IBM RS 6000 AIX 3.2 or later, TCP/IP.

Linux

Hardware

X86 compatible processor

RAM requirements

64 MB of RAM plus an additional 32 MB of RAM for AMS REALTIME Resources

Software

X Windows/Motif, Redhat, TCP/IP.

Advanced Management Solutions Inc., USA

Tel: +1 909 793 0111, Fax: +1 909 793 7405, Toll Free: 800 397 6829, Email: sales@amsusa.com

UK

Tel: +44 (0)118 9605 800, Fax: +44 (0)118 9605 801, Email: sales@amsuk.com

Visit our web site at <http://www.amsrealtime.com>